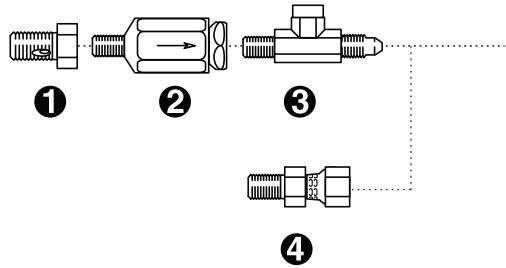
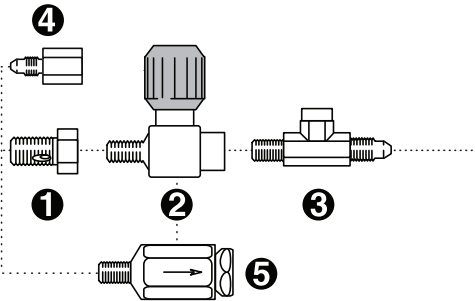


# Air Cascade System Parts Assembly



- 1 AC10014  
CGA 347 Adapter
- 2 AC50030  
Check Valve
- 3 AC20022-1  
Tee
- 4 AC20055  
1/4 MPT x 1/4 JIC-F

## Refill Option A



- 1 AC10014  
CGA 347 Adapter
- 2 AC50080  
On/Off Line Valve
- 3 AC20022-1  
Tee
- 4 AC20035  
JIC x FPT Adapter
- 5 AC50030  
Check Valve

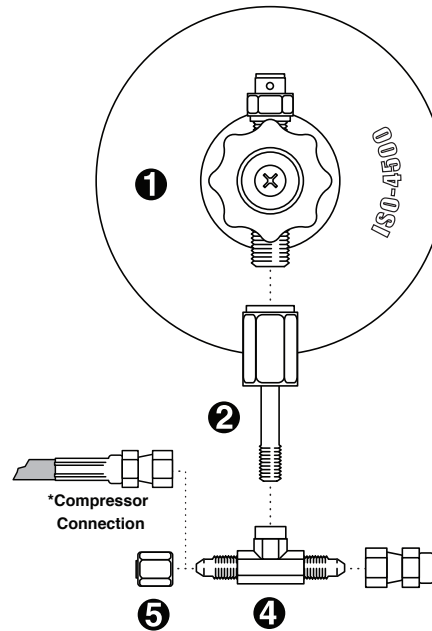
## Refill Option B

1800-3000 PSI = CGA 346 Air  
 3001-5500 PSI = CGA 347 Air  
 5501-7500 PSI = CGA 702 Air



PO Box 1000 Sophia WV, 304-683-4595 • 304-683-3257 Fax  
 www.americanairworks.com, All Rights Reserved. ©2010

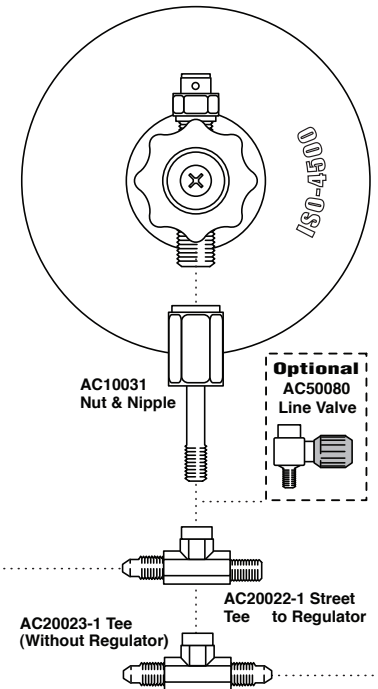
## Standard Configuration



- 1 AC40040A  
4500 PSI DOT
- 2 AC10031\*  
Nut & Nipple
- 3 AC80052  
Pigtail, Flex, 24"
- 4 AC20023-1  
JIC Tee
- 5 AC20161  
JIC Cap

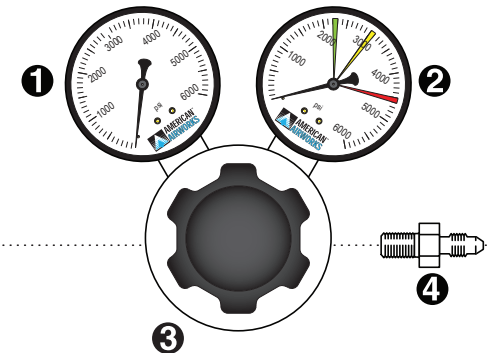
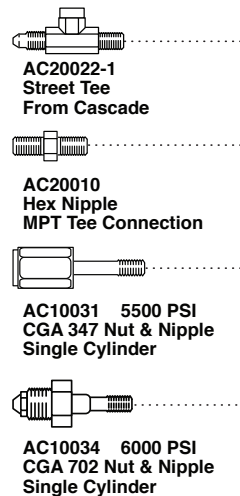
Add or delete cylinder banks with hardware as needed with these components.

## Fill Side



Optional  
AC50080  
Line Valve

## Optional Regulator



- 1 AC30019-2  
6000 PSI Gauge
- 2 AC30019-1  
6000 PSI Gauge
- 3 AC60010  
6000 PSI  
Inlet Pressure  
50/5000 PSI  
Outlet Pressure
- 4 AC20013  
1/4" MPT to 1/4"  
JIC-M Adapter

\*Change to AC10034 for 6000 PSI DOT Cylinders.