

# TECHNICAL BULLETIN

---

**#1** April 7, 1983

## OVERHAUL MANUAL CHANGE 9125-9127

ALL SURVIVAIR Overhaul Manuals P/N 040002, 1981 U.S.D. P/N 040002, Models 9125 and 9127 Regulators Page 14, Figure 4, add Page 5, Section B, Paragraph 1

### Alignment of Injector Outlet

Repair manuals now show an incorrect setting for the injector outlet. It also states that the hole should point toward the left rear corner of the body block.

Please change your manuals to read:

Page 5, Paragraph 1

“Align the outlet hole of the injector so that it points toward the left front corner of the body block” (see figure 4).

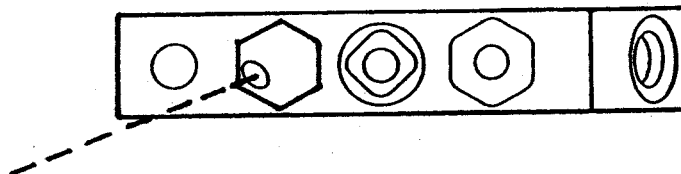
Page 14, Figure 4

“Align injector outlet with front corner of body block assembly.”

The desired objective is to have the air travel directly out of the body block up into the low pressure hose.

Back pressure needed to balance the regulator air chamber is obtained by adjustment of the injector adjustment screw (#47).

For further information contact SURVIVAIR's Technical Services Department at (714) 545-0410.



**FIGURE 4**  
ALIGN INJECTOR OUTLET WITH FRONT  
CORNER OF BODY BLOCK ASSEMBLY